

2024 Statewide WMA Meeting



October 23, 2024

What WMAs do:

- Share reports of new weeds
- Set regional priorities
- Coordinate control work by partners



Legislature

\$\$\$

CDFA

Oversight
Committee

\$\$\$

(Lead, CAC or RCD)
WMA

\$\$\$

WMA partners

Cal-IPC



CDFA's role:

- Set programmatic strategic guidance
- Provide grants to WMAs
- Track work performed
- Organize an oversight committee

Cal-IPC works to:

- Advocate for program funding
- Support regional strategy with CalWeedMapper and Calflora
- Provide webpages and other support for WMAs

Regional EDRR Priority Targets

This map and document with regional invasive plant EDRR targets was updated in October 2021, in collaboration with the California Department of Food and Agriculture, County Agricultural Commissioners, and Weed Management Areas. We encourage you to contribute observations of regional EDRR weed species!



Weed Management Areas

Regional partnerships

Bay Area Region

Central Coast Region

Central Sierra Region

North Central Region

North Sierra Region

Northwest Region

South Central Coast Region

WMAs

Alameda-Contra Costa WMA

Amador WMA

(inactive)

Alpine & Upper Carson WMA

Butte County WMA

Central Sierra Partnership Against Weeds WMA

Colusa, Glenn & Tehama Counties WMA

Del Norte WMA

Eastern Sierra WMA

El Dorado County Invasive Weed Management Group

Humboldt County WMA

Imperial WMA

Kern WMA

Kings Partnership Against Weeds

Lake Tahoe Basin WMA

Lake WMA

Lassen County Special Weed Action Team (SWAT)

(inactive)

Los Angeles County WMA

Low Desert WMA

Marin Sonoma WMA

Mendocino WMA

Modoc WMA

Mojave WMA

Monterey WMA

Napa County WMA

Nevada & Placer Counties WMA

Northern San Joaquin Valley WMA

Plumas & Sierra Counties WMA

Sacramento County WMA

San Benito County WMA

San Diego WMA

San Francisco WMA

San Luis Obispo WMA

San Mateo WMA

Santa Ana River & Orange County

Santa Barbara WMA

Santa Clara WMA

Santa Cruz WMA

Shasta County WMA

Sierra-San Joaquin Noxious Weed Alliance

Siskiyou County WMA

Solano County WMA

Trinity WMA

(inactive, Weed Working Group only)

Tulare County WMA

Ventura WMA

Yolo County WMA

Yuba & Sutter Counties WMA

Setting WMA goals:

- Select priority populations to treat every year
- Implement, track, and report
- Set a statewide goal aligned with 30x30

“collaborative capacity”



INCREASING COLLABORATIVE CAPACITY AND INFRASTRUCTURE FOR LANDSCAPE STEWARDSHIP

How can state agencies support collaboration for landscape stewardship?

WHO WE ARE

Connect people, discover common purpose, and face shared challenges and opportunities together. Straightforward ideas such as these can sometimes give rise to remarkable things.

In 2016, these ideas inspired six landscape-scale collaboratives from sunny Irvine to the misty North Coast's redwoods to form the California Landscape Stewardship Network. Since then, the Network has grown to represent a diverse range of partnerships from across the state that have come together to overcome the challenges we face when working across

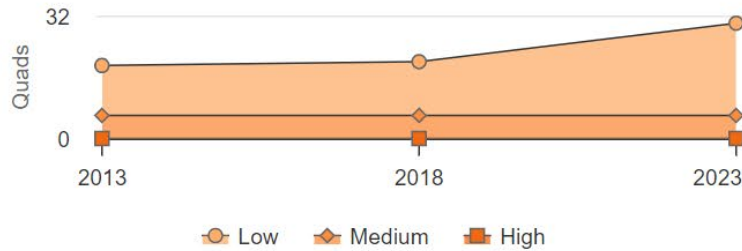
Select Species for Timeline View

Hypericum canariense

Hypericum canariense

[Open in CWM](#)

Abundance by Quad (Where Present)



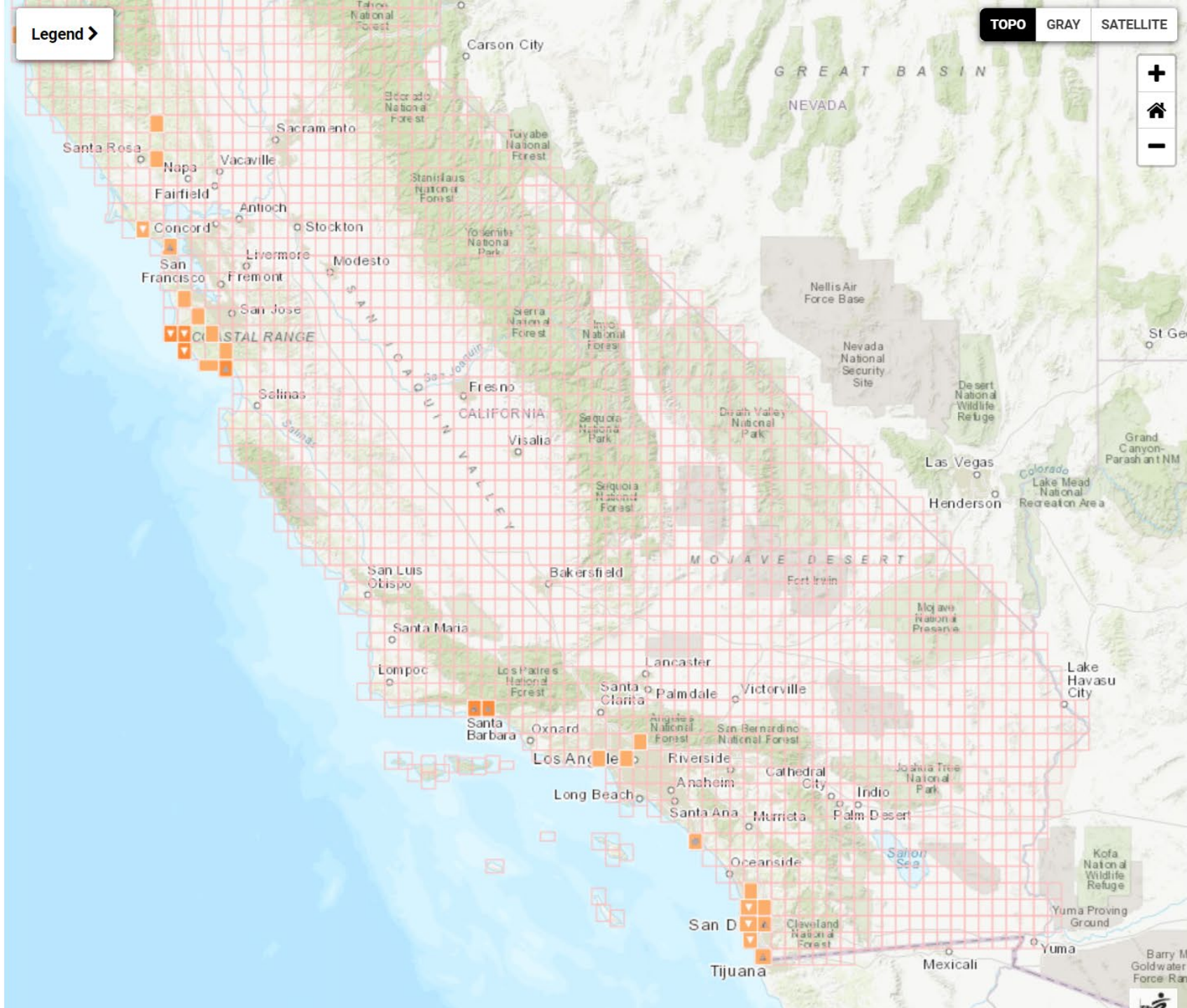
Highcharts.com

Management Percent (Where Present)



Highcharts.com

Year (click to show on map)	2013	2018	2023
Absent	2731	2730	2720
Low	13	14	24
Medium	6	6	6
High	0	0	0



Legend >

TOPO GRAY SATELLITE



Thank you!

Doug Johnson, Cal-IPC
dwjohnson@cal-ipc.org

