



# Teamwork Makes the Dream Work in *Caulerpa* Eradication Efforts

## Co-authors:

Leslie Hart

Bryant Chesney

Jeremy Hass

Terri Reeder



25 October 2024

Presented to:

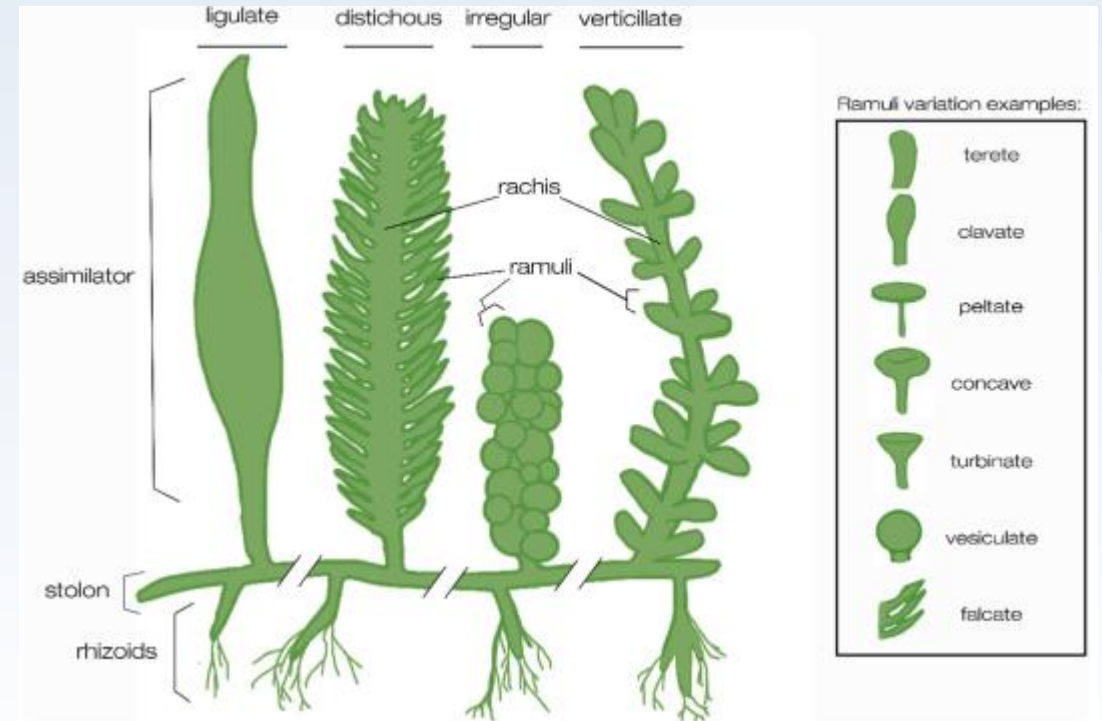
**California Invasive Plant Council  
2024 Symposium**

Presented by:

**Cyndi Dawson**  
Senior Environmental Scientist  
Marine Region

# *Caulerpa* spp. Biology

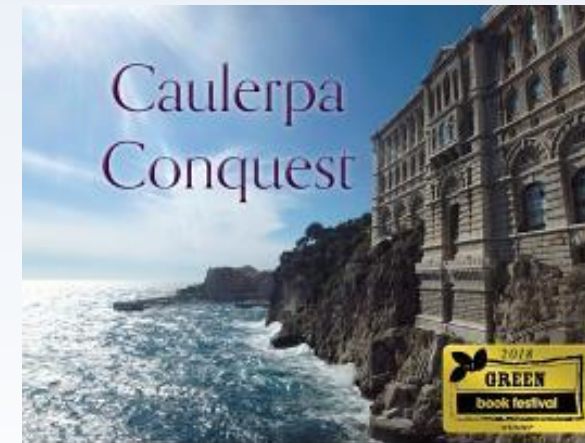
- Single-celled alga
- Invasions have large impacts
  - Mediterranean
  - Australia
  - Canary Islands
- Currently not detectable with eDNA (*C. prolifera*)
- Aquarium trade is the main vector for introductions



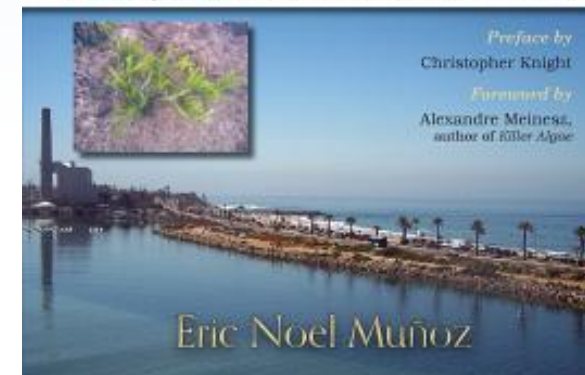


# History of Caulerpa Infestations in CA

- Discovered in Carlsbad and Huntington Beach in 2000
- Southern California Caulerpa Action Team (SCCAT) formed
  - Members span across jurisdictions
  - Coordinating committee
  - Aggregate resources
  - Direct actions
- Declared eradicated 2006
- Globally significant success



A Biological Eradication on the California Coast





# SCCAT & Caulerpa Control Protocol

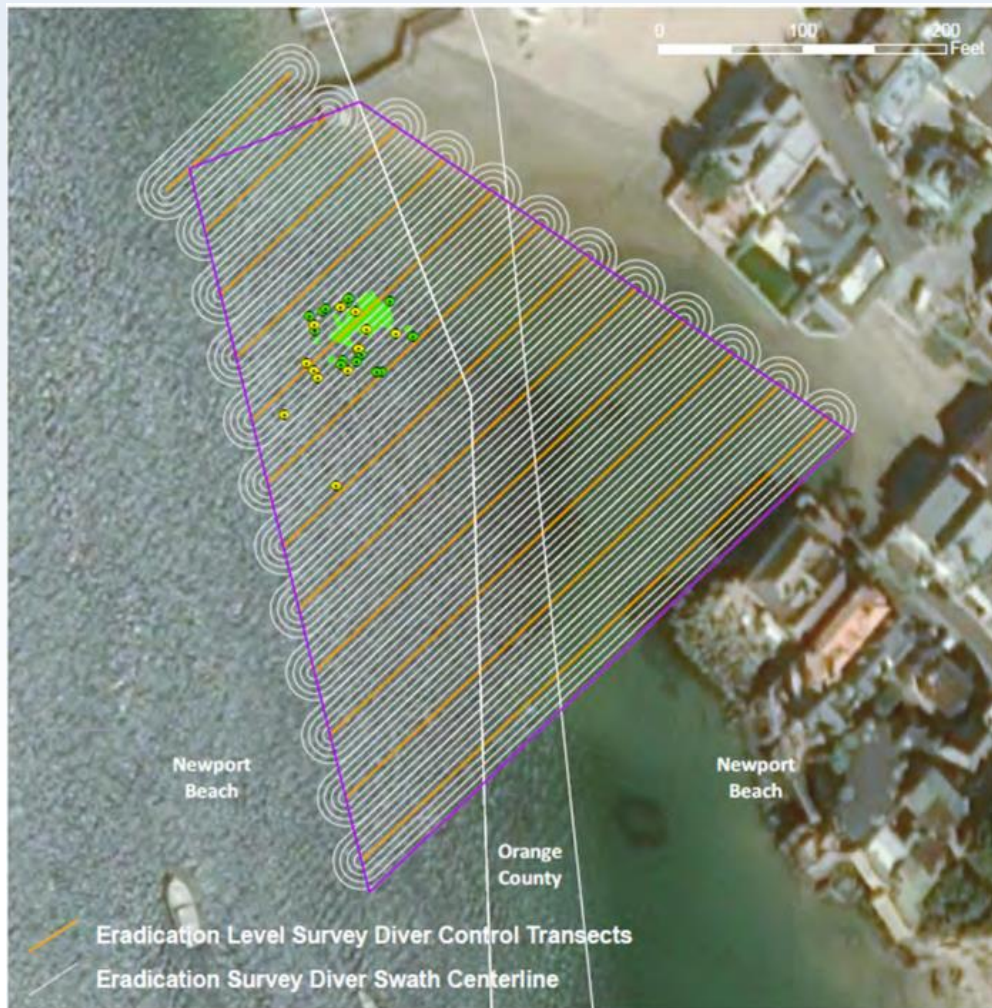
- Federal and state agencies, municipalities, harbors, ports, marinas, homeowner associations, community groups and eNGOs
- Consensus approach adopted by regulators
  - Survey methods
  - Surveillance requirements
  - Eradication threshold







# Newport Bay 2021







# San Diego Bay 2023



- Eelgrass Beds (*Zostera*) (1,899 ac)
- San Diego Bay National Wildlife Refuge - South San Diego Bay Unit
- Coronado Cays *Caulerpa* Survey Area - 100% Coverage (99 ac)
- San Diego Bay National Wildlife Refuge - Sweetwater Marsh
- Additional *Caulerpa* Survey Area - 100% Coverage (443 ac)
- Port of San Diego Jurisdictional Boundary
- Port Jurisdiction *Caulerpa* Survey Area - 100% Coverage (180 ac)



# Lessons Learned

## SUCCESSSES

- Rapid response
- Adoption of shared standards among regulators
- Collaboration through SCCAT
- Successful eradication

## CHALLENGES

- Capacity is always an issue for SCCAT members
- High bar for eradication
- Funding for surveillance
- Divers are expensive





??Questions??



**CONTACT**

**[Caulerpa@Wildlife.ca.gov](mailto:Caulerpa@Wildlife.ca.gov)**

**REPORT SIGHTINGS**

**<https://wildlife.ca.gov/Conservation/Invasives/Species/Caulerpa>**







# Current Caulerpa Infestation Sites

